



BOSCH
Invented for life



Intelligent Transport Management System (iTraMS)

A smart answer to connected mobility



Robert Bosch Engineering and Business Solutions Private Ltd.
123, Industrial layout,
Hosur Road, Koramangala,
Bangalore-560095, INDIA

 Connect@in.bosch.com

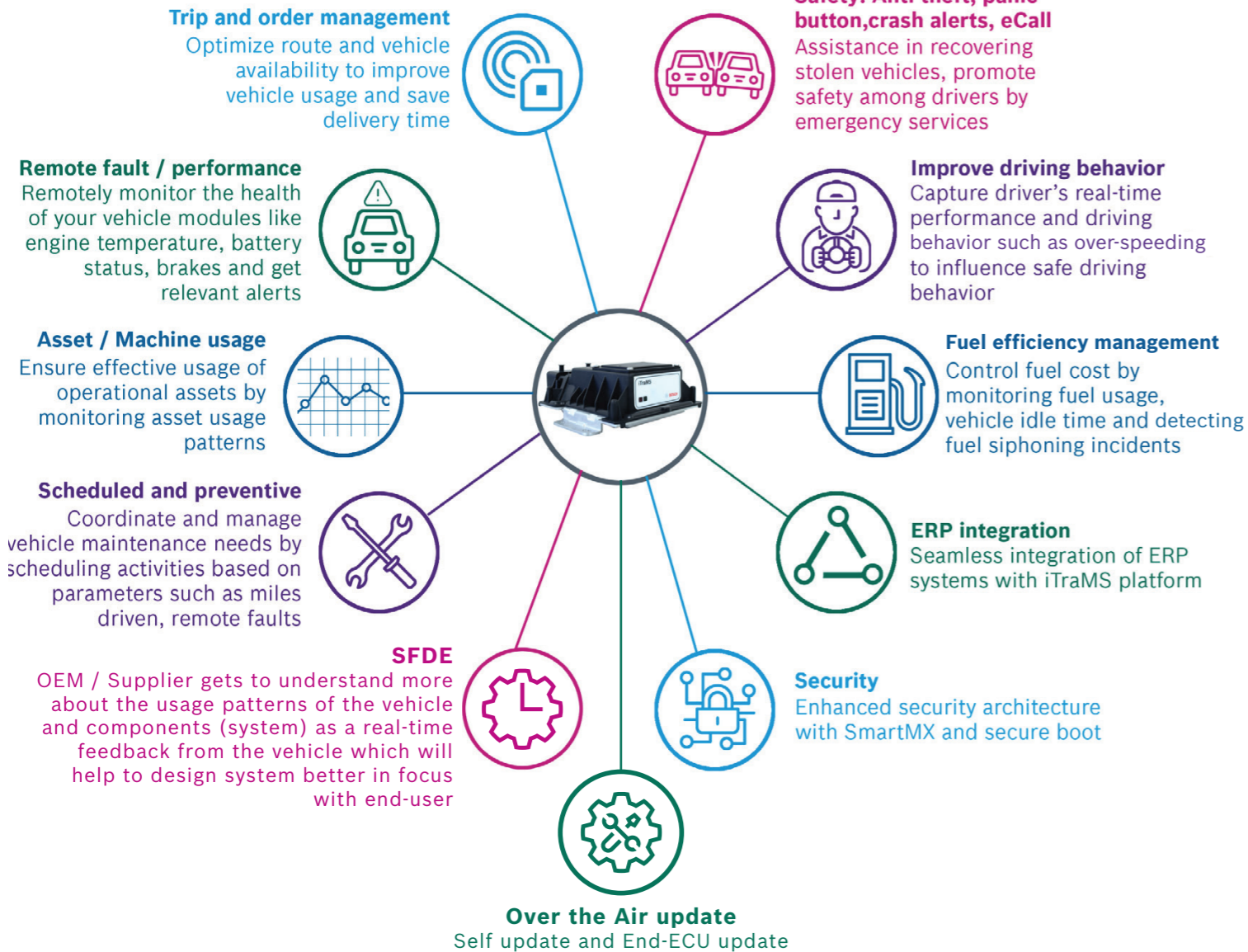
 www.bosch-india-software.com

iTraMS: Intelligent Transport Management System

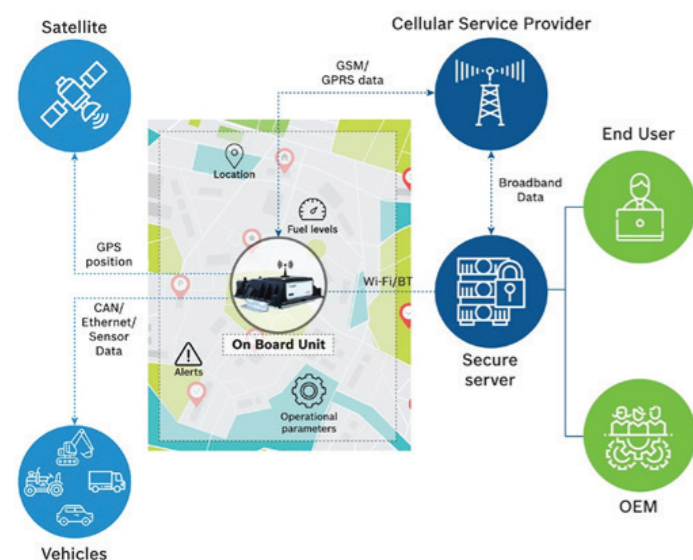
iTraMS is an end-to-end Vehicle to Infrastructure (V2I) ecosystem, designed to address the challenges of modern-day transportation and management of vehicles.

Leveraging on its years of mobility solutions experience, Bosch has the edge to provide insights on vehicle health management and performance. Through data analytics a customer can get valuable insights on vehicle performance, usage and health.

Key Use Cases



Solution Overview

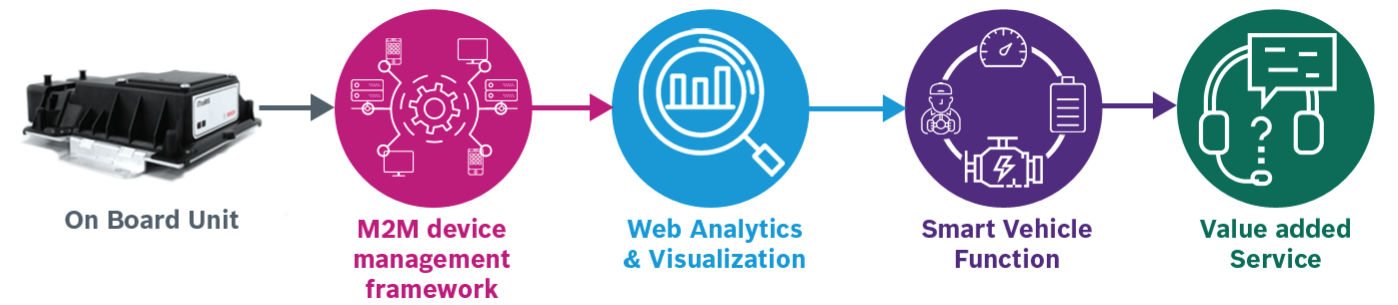


Solution Application Areas

This solution can be deployed across all vehicle platforms – Commercial, Passenger, Construction as well as Farm equipment. iTraMS offers complete range of smart connectivity solutions for different domains.

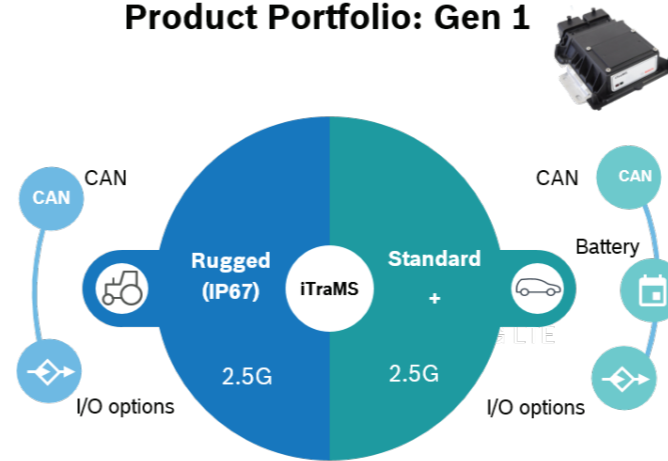


End-to-end Solution

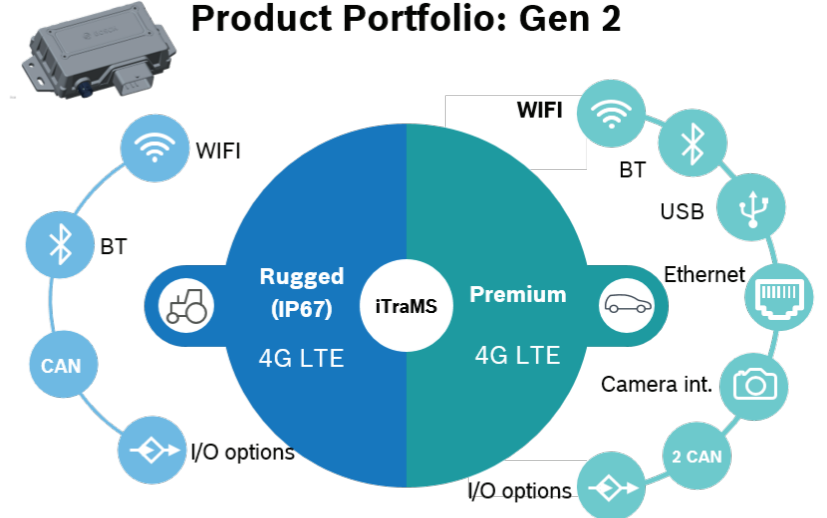


Connectivity Control Unit

Product Portfolio: Gen 1



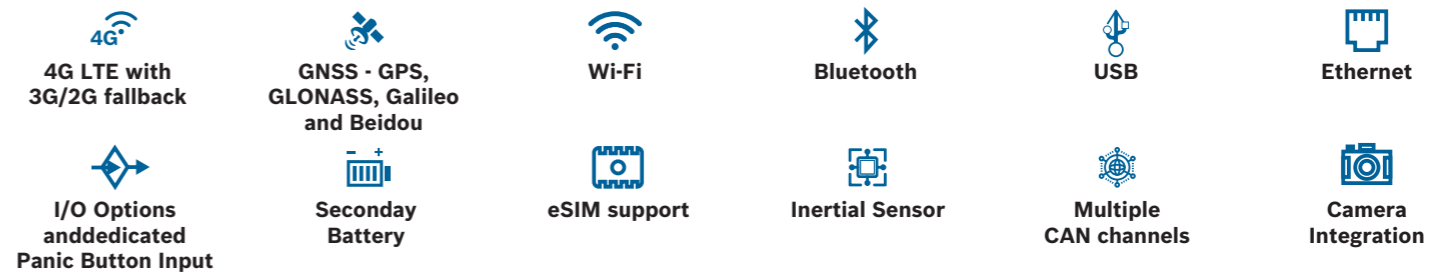
Product Portfolio: Gen 2



- ▶ Product status: **In Series** (since May 2016)
- ▶ Key customers: OEM's in India
- ▶ Devices in field: 10000+ (Tractors, Construction, CV)

- ▶ Product status: Series Planned in Q1/Q2 2019
- ▶ Key customers in South Korea, EU and NA region

The feature highlights



Product Compliances

No	Capability	Description
1	Manufacturing	TS16949 Certified
2	Certifications	Fully AEC qualified components & RoHS AIS 004, E-marking, CE Certification
3	EMI EMC	AIS 004, CE, ISO 11452, ISO 7637-2, CISPR 25, ISO 10605
4	Environmental standards	ISO 16750

Our Value Proposition

Automotive Grade Connectivity Control Unit

Automotive Grade Telematics connectivity HW, that shall meet all the relevant validations that are expected out of the system. This capability is also backed up by world-class in-house design house and validation experts.

Security

Bosch gives emphasis on security with a robust in-house security validation and clearance for every product. In line with the Product Engineering Process we also have clearly defined policy and framework for Security Engineering Process where risk, threats and data is scrutinized for any vulnerabilities that exists.

Machine/Engine function expertise

Bosch, being a premier automotive company brings its expertise in engine and Machine Management Systems into telematics domain. This helps in value add for features like remote diagnostics, FOTA (ECU Flashing over the Air) and preventive maintenance.